

VIDYA BHAWAN BALIKA VIDYA PITH

CLASS- 3

DATE - 14. 10. 20

SUB-MATHS

S.T-PRAGYA

BASED ON N.C.E.R.T PATTERN

CH- FRACTION

When a whole is divided into parts , each part is called a fraction of the whole.

Example : Sharing and distributing the cake on Birthdays.

First of all read the page 1 2 5 .

A fraction consists of a numerator and denominator and is separated by a line.

The numeral above the line is called the numerator

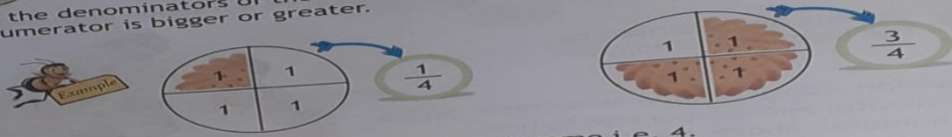
And the numeral below the line is called the

Denominator.

BIGGER AND SMALLER FRACTIONS:-

IV. BIGGER AND SMALLER FRACTIONS

1 If the denominators of the fractions are equal, then the fraction with the larger numerator is bigger or greater.



The denominator of both the fractions is same i.e. 4.
Comparing the numerators $3 > 1$.

$$\therefore \frac{3}{4} > \frac{1}{4}$$

$$\text{or } \frac{1}{4} < \frac{3}{4}$$

2 If the numerator of the fractions are equal, then the fractions with the smaller denominator is bigger or greater.

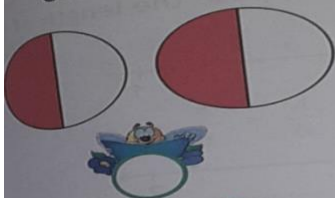


The numerators of both the fractions are same i.e. 3
Comparing the denominators $8 > 7$ but comparing the fractions

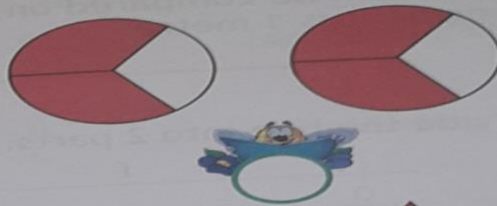
$$\frac{3}{7} > \frac{3}{8}$$

$$\text{or } \frac{3}{8} < \frac{3}{7}$$

Write the shaded fraction in the circle ($>$, $<$, $=$):



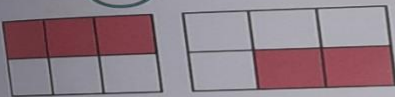
2



4



5



6



7



8

